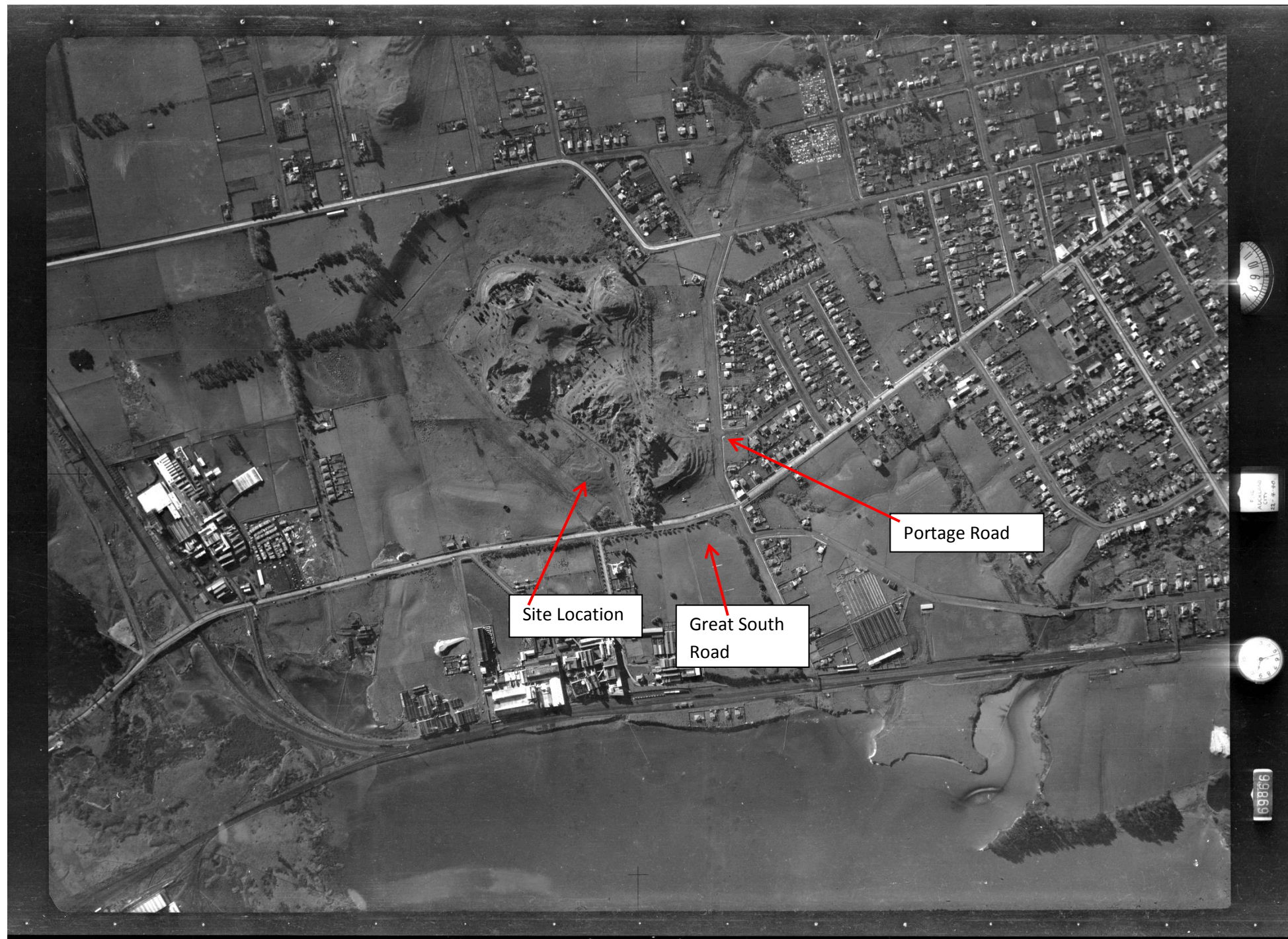


Mt Richmond Domain Western Playing Field – Underlying Ground Conditions, Construction Photographs

1676 Fraser Geologics Ltd Prepared 30 July 2020

Historical aerial photographs have been sourced from Retrolens (www.retrolens.nz) and the National Library (www.natlib.govt.nz) image databases to assess how the western playing field was constructed in the early 1960s. Photos indicate the field was constructed from granular volcanic fill, predominantly derived from a quarry on the corner of Portage and Great South Road with additional material from immediate areas of cut on the adjacent volcanic cone. Underlying (pre development) ground conditions beneath the field comprise volcanic lava flows with an area of organic soils visible on the adjacent property to the north, well clear of the site.

Ground conditions on the playing field comprise well draining scoria and basalt fill materials. These materials provide a highly competent and cost effective foundation / subgrade with the site considered highly suitable for future redevelopment uses, particularly those that might require asphalt surfaces such as netball courts or artificial turf surfaces such as hockey fields or similar. Such conditions are relatively rare for playing fields across Auckland City and would provide for considerable future cost savings if redevelopment is being considered.



©Sourced from <http://retrolens.nz> and licensed by LINZ CC-BY 3.0

Retrolens - NZAM vertical aerial photograph, SN146 run 69 image 19. Flown 22.4.1940



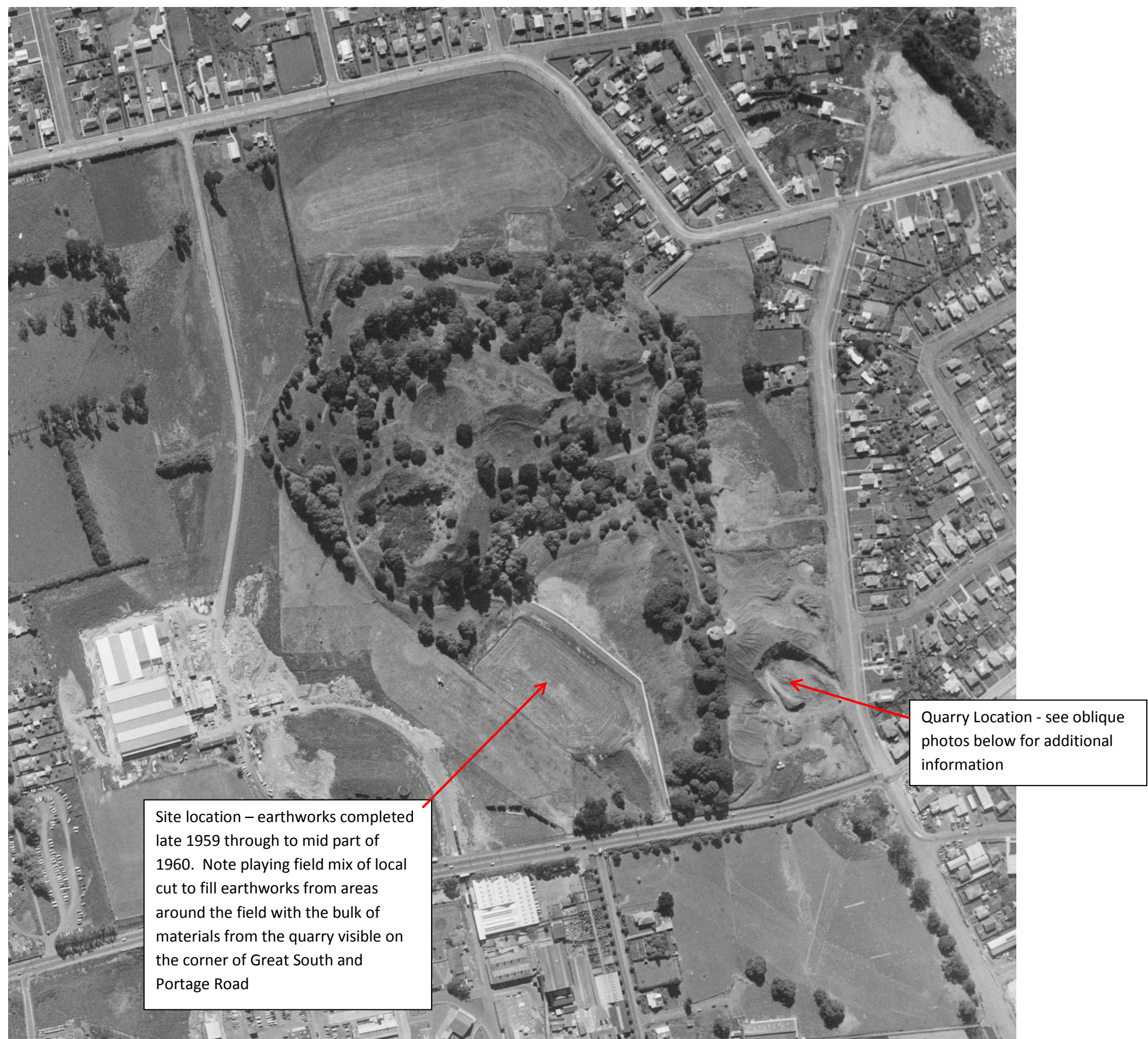
Retrolens - NZAM vertical aerial photograph, SN146 run 69 image 19. Flown 22.4.1940 – cropped and enlarged image, details outlined.



Late 1961 photograph – site
works for playing field have
been completed. Note quarry

©Sourced from <http://retrolens.nz> and licensed by LINZ CC-BY 3.0

NZAM vertical aerial photograph, SN1392 run 3238 image 23. Flown 02.11.1961



Site location – earthworks completed late 1959 through to mid part of 1960. Note playing field mix of local cut to fill earthworks from areas around the field with the bulk of materials from the quarry visible on the corner of Great South and Portage Road

Quarry Location - see oblique photos below for additional information

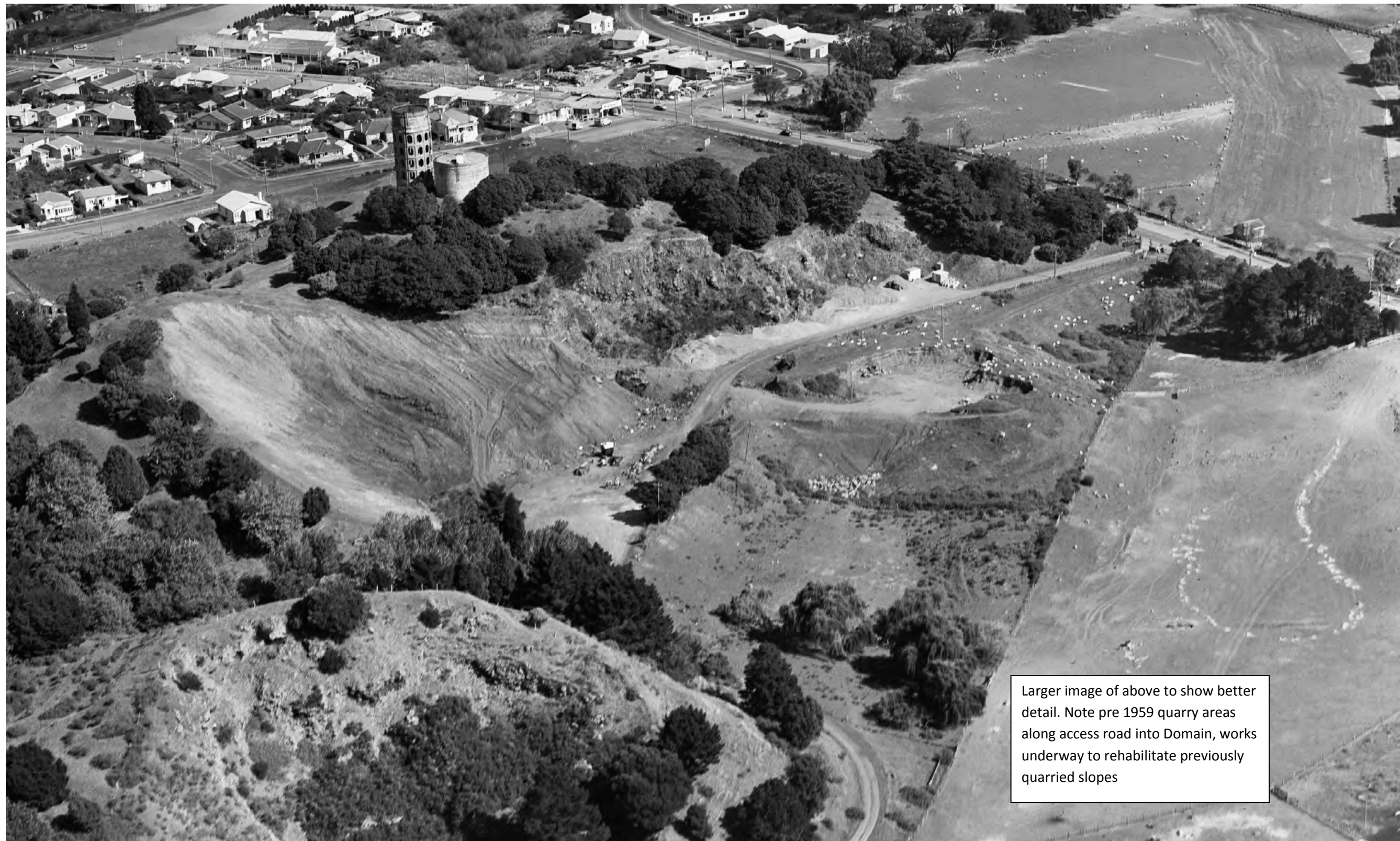
NZAM vertical aerial photograph, SN1392 run 3238 image 23. Flown 02.11.1961 – Cropped and enlarged image



Note as at mid 1959 works have begun to tidy up previously quarried areas on slopes above the playing field

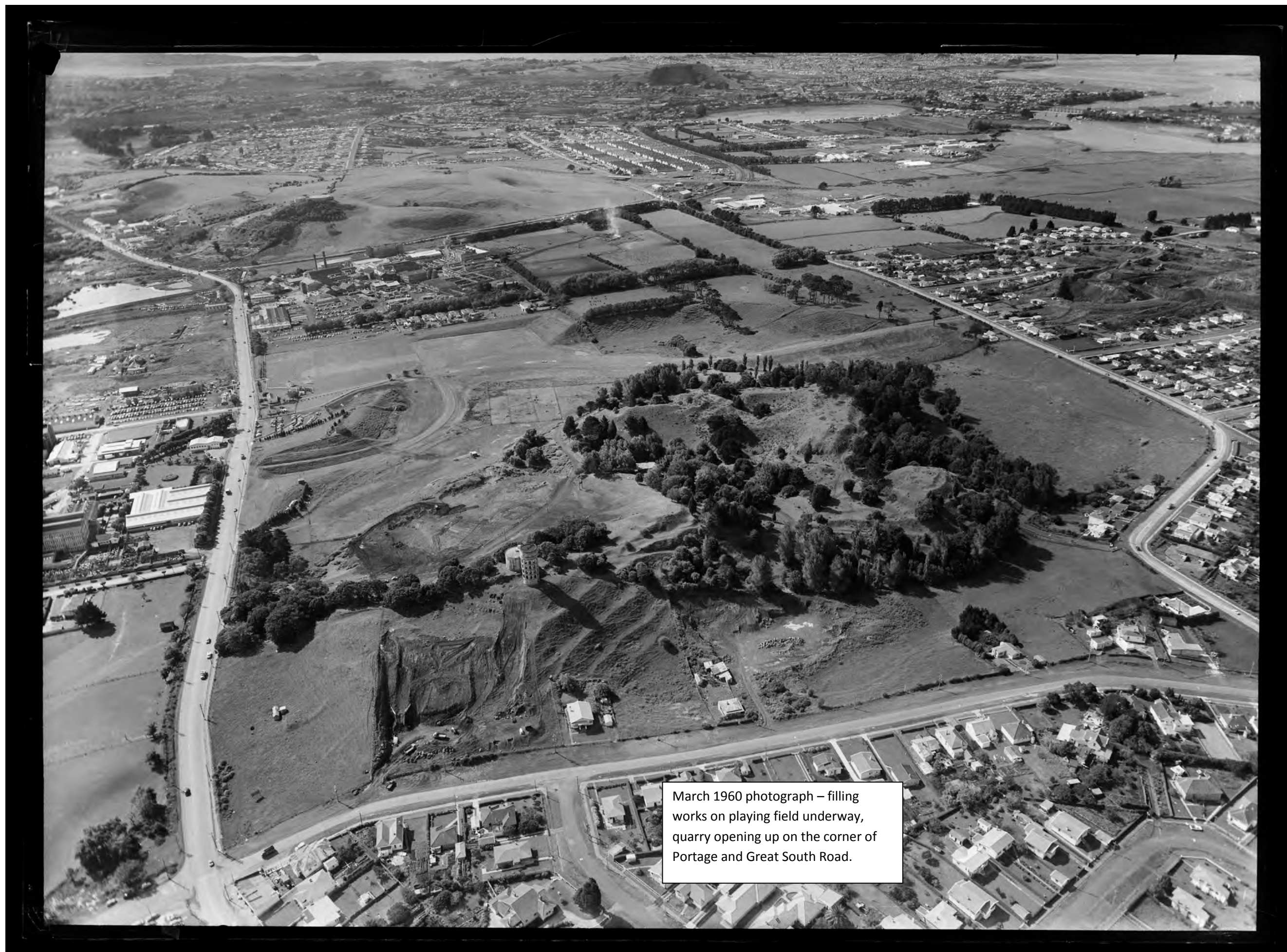
Site Location – note lava flows under playing field area (rubbly upstanding terrain).

Organic soils are over the boundary to the west (more visible in vertical photographs above)



Larger image of above to show better detail. Note pre 1959 quarry areas along access road into Domain, works underway to rehabilitate previously quarried slopes

5th April 1959. Mt Richmond & Otahuhu, Auckland. Whites Aviation Ltd, Photographs, Ref WA-50124. Alexander Turnbull Library, Wellington, NZ. Item 32370093 Cropped and enlarged image.



March 1960 photograph – filling works on playing field underway, quarry opening up on the corner of Portage and Great South Road.



16th March 1960. Mt Richmond, Otahuhu, Auckland. Whites Aviation Ltd, Photographs, Ref WA-52714. Alexander Turnbull Library, Wellington, NZ. Item 32973254 Cropped and enlarged image



16th March 1960. Mt Richmond, Otahuhu, Auckland. Whites Aviation Ltd, Photographs, Ref WA-52715. Alexander Turnbull Library, Wellington, NZ. Item 32973258



March 1962 Photo - earthworks complete,
playing field topsoiled and grassed